

TWO YEARS LIMITED WARRANTY

For a period of two (2) years from date of purchase, SFA Companies, Inc. will repair or replace, at its option, without charge, any of its products which fails due to a defect in material or workmanship under normal usage. This limited warranty is a consumer's exclusive remedy.

Performance of any obligation under this warranty may be obtained by returning the warranted product, freight prepaid, to SFA Companies, Inc. Warranty Service Department, 10939 N. Pomona Ave., Kansas City, MO 64153.

Except where such limitations and exclusions are specifically prohibited by applicable law,

(1) THE CONSUMER'S SOLE AND EXCLUSIVE REMEDY SHALL BE THE REPAIR OR REPLACEMENT OF DEFECTIVE PRODUCTS AS DESCRIBED ABOVE. (2) SFA Companies, Inc. SHALL NOT BE LIABLE FOR ANY CONSEQUENTIAL OR INCIDENTAL DAMAGE OR LOSS WHATSOEVER. (3) ANY IMPLIED WARRANTIES, INCLUDING WITHOUT LIMITATION THE IMPLIED WARRANTIES OF MERCHANTABILITY AND FITNESS FOR A PARTICULAR PURPOSE, SHALL BE LIMITED TO TWO YEARS, OTHERWISE THE REPAIR, REPLACEMENT OR REFUND AS PROVIDED UNDER THIS EXPRESS LIMITED WARRANTY IS THE EXCLUSIVE REMEDY OF THE CONSUMER, AND IS PROVIDED IN LIEU OF ALL OTHER WARRANTIES, EXPRESS OR IMPLIED. (4) ANY MODIFICATION, ALTERATION, ABUSE, UNAUTHORIZED SERVICE OR ORNAMENTAL DESIGN VOIDS THIS WARRANTY AND IS NOT COVERED BY THIS WARRANTY.

Some states do not allow limitations on how long an implied warranty lasts, so the above limitation may not apply to you. Some states do not allow the exclusion or limitation of incidental or consequential damages, so the above limitation or exclusion may not apply to you. This warranty gives you specific legal rights, and you may also have other rights, which vary from state to state.

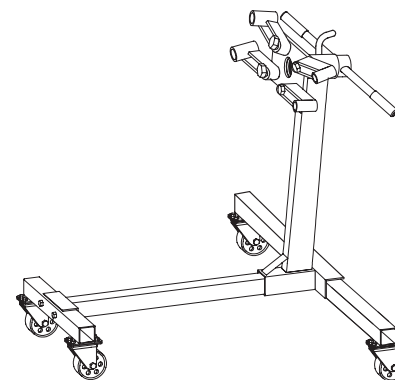


Engine Stand

Operating Instructions & Parts Manual

Model Number
T-3101

Capacity
1000 lb



! ATENCIÓN

- Leer, comprender, y seguir las instrucciones antes de utilizar el aparato.
- El manual de instrucciones y la información de seguridad deben estar comunicado en lengua del operador antes del uso.
- No seguir estas indicaciones puede causar daños personales o materiales.

Shinn Fu Company of America, Inc.
10939 N. Pomona Ave.
Kansas City, MO 64153
Phone (816)891-6390, fax (816)891-6599
© Nov. 2015

! WARNING



To avoid crushing and related injuries:
NEVER work on, under or around a
vehicle supported by dollies.

Save these instructions. For your safety, read and understand the information contained within. The owner and operator shall have an understanding of this product and safe operating procedures before attempting to use this product. Instructions and safety information shall be conveyed in the operator's native language before use of this product is authorized. Make certain that the operator thoroughly understands the inherent dangers associated with the use and misuse of the product. If any doubt exists as to the safe and proper use of this product as outlined in this factory authorized manual, remove from service. **Inspect before each use.** Do not use if broken, bent, cracked or otherwise damaged parts are noted. If the engine stand has been or suspected to have been subjected to a shock load (a load dropped suddenly and unexpectedly upon it), discontinue use until checked out by an authorized factory service center. Owners and operators of this equipment shall be aware that the use of this equipment may require special training and knowledge. It is recommended that an annual inspection be done by qualified personnel and that any missing or damaged parts, decals, warning/safety labels or signs be replaced with factory authorized replacement parts only. Any engine stand that appears to be damaged in any way, is worn or operated abnormally shall be removed from service immediately. Labels and owner's manuals are available from manufacturer (see Replacement Parts, page 5).

PRODUCT DESCRIPTION

Pro-Lift Engine Stands are designed to safely support rated capacity engines. Welded steel tube construction, heavy gauge steel plate head plates and mounting arms along with compliance with factory standards ensure safety, strength and stability.

BEFORE USE

1. Inspect stands before each use. Do not use if bent, broken or cracked components are noted. Ensure that casters/wheels and head plate rotate freely. Check for and tighten any loose assemblies.
2. Verify that the product and the application are compatible.
3. Before using this product, read the owner's manual completely and familiarize yourself thoroughly with the product and the hazards associated with its improper use.

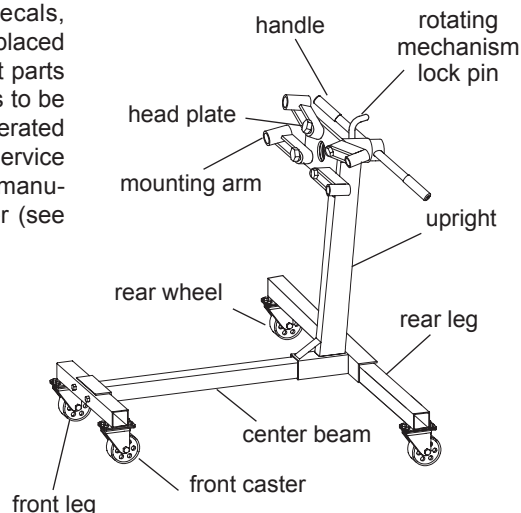


Figure 1 - Typical Engine Stand Nomenclature

! WARNING

Study, understand, and follow all instructions provided with and on this device. Do not exceed rated capacity. Use only on hard, level surface. Never put any portion of your body under engine when it is supported by the engine stand. Use only hardened, appropriately sized bolts to secure engine to stand. Center the engine on mounting plate and ensure attaching hardware is tightly fastened. Off center loading may cause the engine to rotate unexpectedly and cause the loaded stand to tip over. Lock mounting plate rotating mechanism before beginning engine service. Unlock rotating mechanism slowly and carefully. Do not modify or alter this product. Do not use this device for any purpose other than that for which it is intended. Failure to heed these markings may result in personal injury

ASSEMBLY

Model: T-3101 (see Figure 2)

Important: Reference numbers are for assembly purpose only. See replacement parts illustration for ordering replacement parts.

1. Attach 2 front casters (Ref. No. 15) using the lock washers (Ref. No. 13) and nuts (Ref. No. 12).
2. Attach 2 rear wheels (Ref. No. 3) using the washers (Ref. No. 2) and snap-rings (Ref. No. 1).
3. Attach upright (Ref. No. 16) to the rear leg (Ref. No. 4) using the M12 x 80 bolt (Ref. No. 5), washer (Ref. No. 6), lock washer (Ref. No. 7) and finally the hex nut (Ref. No. 8).
4. Attach the center beam (Ref. No. 10) to the front leg assy. (Ref. No. 11) using two M12 x 80 bolts (Ref. No. 5), lock washer (Ref. No. 7) and hex nut (Ref. No. 8).
5. Slide mounting plate (Ref. No. 20) into the collar portion of the upright (Ref. No. 16), align rotating position holes and insert lock pin (Ref. No. 17).
6. Attach the four mounting adapter arms (Ref. No. 21) to the slotted portion of the mounting plate (Ref. No. 20) using M14 x 60 bolts (Ref. No. 22), lock washers (Ref. No. 14), flat washers (Ref. No. 13) and hex nut (Ref. No. 12).
7. Insert handle (Ref. No. 19) into the hole in the stem portion of the mounting plate (Ref. No. 20) which protrudes from the rear of the collar of the upright (Ref. No. 16).
8. Attach the handle grips (Ref. No. 18) onto both ends of handle (Ref. No. 19).

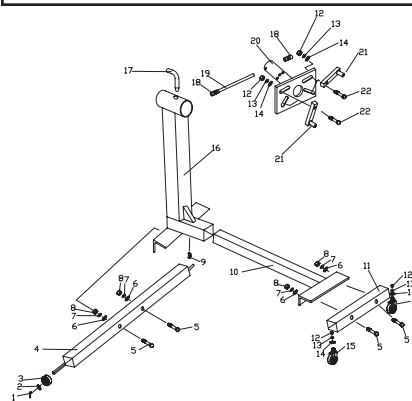


Figure 2 - Assembly illustration for model T-3101

OPERATION

- 1. Ensure application is compatible with product.
- 2. Align engine with stand, then adjust mounting arms to match bell housing mounting bolt holes.
Rotational lock must be secure before applying load.
- 3. Carefully secure engine so that load is centered on stand. Secure with suitable high strength stud bolts and flat washers. **Ensure** threads are compatible with your engine. Use flat washers on both sides of head plate.
- 4. To rotate engine, carefully remove pin. Use handle to rotate, then secure by re-installing pin (Refer to Fig. 2).
- 5. Check to ensure stand is secure before working on or around stand. **Never** work under loaded stand.

Note: Do not move loaded stand off hard smooth, level surface!

MAINTENANCE

Periodically inspect each stand. Ensure all parts move freely. Apply very light coating of grease to head plate collar. If rust appears, sand affected area and cover with suitable utility paint.

REPLACEMENT PARTS

Available Parts: Please refer to the parts drawing when ordering parts. Not all components of the stand are replacement items, but are illustrated as a convenient reference of location and position in the assembly sequence. When ordering parts, give model number, serial number and description below. Call or write for current pricing: phone (816) 891-6390, fax (816) 891-6599 or contact Pro-Lift Customer Support. 10939 N. Pomona Ave., Kansas City, MO 64153.

Model T-3101

Part No.	Description	Quantity
1	head plate	1
2	mounting arm assembly	4
3	front Wheel assembly	2
4	rear Caster assembly	2
5	handle assembly	1
6	lock pin	1
7	hardware kit (not shown)	all nuts and bolts
--	label	1
--	owner's manual	1

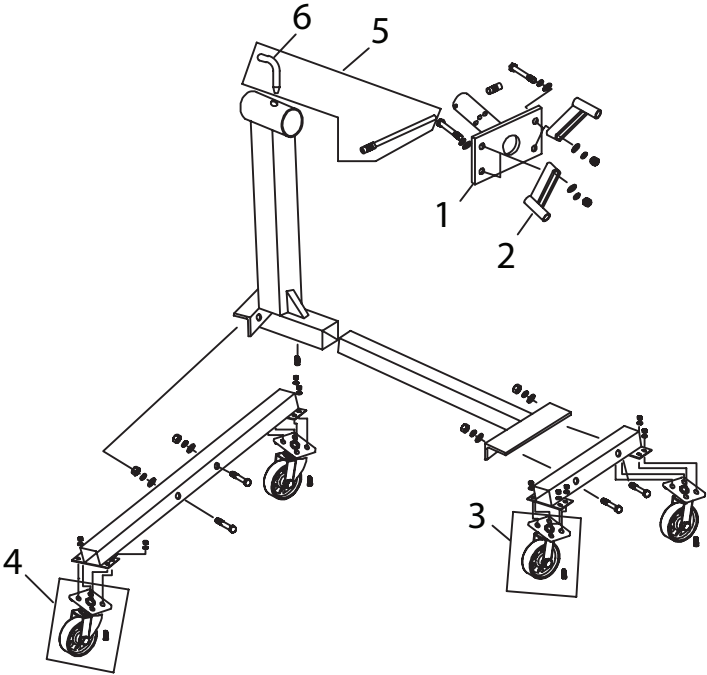


Figure 4 - Replacement Parts Illustration for Model T-3101

NOTES:

NOTES: