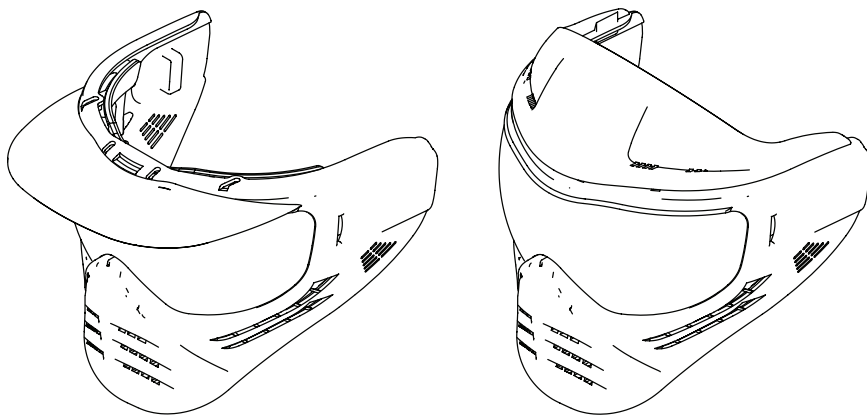




**The World Leader in Phace Protection!**

## **Tactical Mask**



This is the safety alert symbol. It is used to alert you to potential personal injury hazards. Obey all safety messages that follow this symbol to avoid possible injury or death.

**Mask, Lens Care, Lens Replacement and Headgear Assembly Instructions**



## WARNING

### THIS IS NOT TO BE USED FOR PAINTBALL

- Tactical masks are available, contact your reseller.

### SAFETY AND GENERAL INFORMATION

- Failure to comply with the enclosed may result in injury or blindness.
- Materials which come into contact with the wearer's skin could possibly cause allergic reactions to susceptible individuals.
- Scratched or damaged oculars (lenses) should be replaced.

### NOTICE:

- PLEASE DON'T THROW AWAY THESE INSTRUCTIONS.
- THESE WARNINGS ARE VERY IMPORTANT TO YOUR SAFETY.
- FOLLOW ALL INSTRUCTION EXACTLY TO PROLONG THE LIFE OF YOUR COOL NEW SAVE PHACE TACTICAL MASK! FAILURE TO DO SO MAY RESULT IN SERIOUS EYE INJURY OR BLINDNESS.
- NEVER EVER REMOVE THE MASK WHEN YOU ARE IN OR NEAR AN AREA WHERE PAINTBALL MARKERS ARE BEING USED OR WHEN HANDLING A PAINTBALL MARKER (GUN).
- NEVER EVER REMOVE THE MASK WHILE PLAYING OR IN THE PLAYING AREA, EVEN IF THE LENS FOGS OR GETS DIRTY.
- BEFORE EACH GAME, BREATHE ON THE INSIDE SURFACE OF YOUR LENS. IF IT FOGS UP, AND BEFORE YOU USE YOUR MASK, REPLACE THE LENS OR USE OUR SAVE PHACE ANTI FOG SOLUTION.
- USE ONLY THE SAVE PHACE APPROVED LENSES THAT HAVE BEEN DESIGNED FOR YOUR SAVE PHACE TACTICAL MASK.
- CHECK THE LENS FOR PROPER INSTALLATION EACH TIME BEFORE PLAY.
- CHECK THE LENS BEFORE AND AFTER EACH USE.
- REPLACE THE LENS AFTER ONE YEAR, EVEN IF IT LOOKS OR SEEMS TO BE IN PERFECT CONDITION.
- IMMEDIATELY REPLACE THE LENS IF IT SHOWS CRACKS.
- REPLACE THE LENS IMMEDIATELY IF IT HAS RECEIVED A DIRECT IMPACT FROM 10 FEET (3m) OR LESS FROM A PAINTBALL.
- DO NOT MAKE ANY MODIFICATION TO YOUR MASK.
- THE RETENTION STRAP IS NOT AN EAR PROTECTOR AND SHOULD NOT BE USED AS EAR PROTECTION.
- BEFORE PLAY, CHECK ALL MARKERS WITH A CHRONOGRAPH. ANY MARKER THAT EXCEEDS 300 F.P.S. (91 M/S) SHOULD NOT BE USED FOR PLAY. HIGHER SPEEDS COULD EXCEED THE RESISTANCE OF YOUR MASK AND LEAD TO SERIOUS INJURY.
- ALWAYS FOLLOW SAFETY RULES OF THE GAME WHEN PLAYING AND WHEN HANDLING PAINTBALL MARKERS, (GUNS).
- IN VERY RARE CASES, ANY MASK MAY CAUSE SKIN IRRITATION AND SHOULD NOT BE WORN BY PERSONS WHO ARE SUBJECTED TO DERMATITIS OR OTHER SKIN CONDITIONS. IN CASE OF IRRITATION, DISCONTINUE THE USE OF THE MASK IMMEDIATELY AND CONSULT A PHYSICIAN.

## LENS CARE INSTRUCTIONS

Caution!! Read and follow these instructions EXACTLY for care and cleaning of the lenses.

Your cool new Save Phace Tactical lenses are made from the highest quality poly carbonate known to man. BUT! IMPORTANT, PLEASE know that lenses will deteriorate, weaken and break if you don't clean them correctly every time you clean them. AND anti fog solutions eventually come off. If you clean the lenses improperly, you'll increase the rate of deterioration or possibly wipe off the coatings. So, PLEASE follow these instructions every time you clean the lens.

1. NEVER use Windex®, 409®, Fantastic®, gasoline or anything that has alcohol or ammonia in it to clean your lens. Most lens cleaners have ammonia or alcohol that will deteriorate the lens coatings and/or lens material and may cause the lens to break. If your lens comes in contact with one of these, throw it away and get a new replacement lens from us.
2. ALWAYS clean your lens every time you use it or before each game!
3. Use warm clean water and the Save Phace Micro fiber lens cloth/bag or lint free cotton cloth to clean the lens. NEVER use paper towels, newspaper, sandpaper, etc. to clean the lens.
4. Clean the lens sealing channels on both the lens and mask. Sometimes paint will get into and build up in these areas and may cause the lens to not seat correctly in the mask.
5. NEVER let paint or paint spray stay on the lenses overnight!
6. Single Lens Care: Take the lens out of the mask and wash with warm clean water and dry with Save Phace Micro fiber Lens Cloth/bag.
7. Thermal Lens Care: NEVER EVER submerge the thermal lens in water. Never scrub the soft inner lens. Never apply any type of anti fog solution to the inner lens.
8. NEVER store your Save Phace lenses or mask near chemicals or fumes.
9. NEVER store your Save Phace lenses or mask in hot places or near heat sources, for example in the trunk of your car, in plastic bags, in direct sun light.

Always store in cool dry places. Always store the mask in a cool dry place and away from all chemicals. Transport the mask in a protective Save Phace mask bag.

## LENS INSTALLATION AND REPLACEMENT

- **IMPORTANT:** If you can pull the Lens Locking Key out of the Lens Anchor, DO NOT USE the MASK! Replace the Lens Locking Anchor and Lens Locking Keys before you use your mask.
- **IMPORTANT:** There are 4 Parts to the Lens Locking System; 2-Lens Locking Anchors and 2 Lens Locking Keys. Each piece is marked with an "R" and "L".
- **IMPORTANT:** If you do not install ALL 4 Lens Locking Pieces correctly DO NOT Use the Mask.

1. Remove the Strap.
2. Insert the lens through the lens channels.
3. Press the lens firmly into the mask and install the Lens Locking Anchor that is marked "R" installed on the Right side. And vice versa. IMPORTANT: Make sure the "R" and "L" markings on the Lens Locking Anchor are facing toward the mask.
4. After both Anchors are in place, insert the Lens Locking Key marked with an "R" through the hole on the Lens Anchor "R" and fully press the Lens Key through the Lens Key Channel until it is flush against the Lens. You should feel the Lens Locking Key lock into place. IMPORTANT: Make sure the "R" and "L" markings on the Lens Locking Keys are facing towards the inside of the mask.

## STRAP REPLACEMENT

Press the strap clips together and press the strap clip toward the back of the mask.

## **MASK FIT AND CARE INSTRUCTIONS**

### **GOGGLES MUST FIT PROPERLY AND CORRECTLY TO PROVIDE PROTECTION!**

1. Tighten the adjustable strap enough to hold the mask firmly in place. If you can shake the mask off, it's too loose.
2. Make sure the foam in the inside of the goggle area seals around your face.
3. **CLEAN** the mask after **EACH** use. Failure to do so may cause the paint to stick to the mask. Clean the mask and foam with warm clean water and dry off with lint free towel.
4. After proper cleaning, apply **ONLY** Save Phace Mask Protectant to help you mask clean easier after a direct Paintball hit.

## **FOAM INSTALLATION AND CARE INSTRUCTIONS**

If your Save Phace mask comes with R.W.I. (Replaceable, (hand)Washable, Interchangeable) foam please do not clean the foam with any detergent that could cause skin irritations.

1. To uninstall the foam, starting on one side, grab the foam support, not the foam itself, and starting from the top edge, gently roll the foam support up and out towards you and work your way to the other side until the foam support is completely off the tops of the foam base.
2. To install the foam, simply reverse the process and when you hear a **SNAP**, the foam and support is secured on the foam base... **PLEASE** check to ensure all edges of the foam support are secured around the edges of the foam base.

## **MASK CLEANING AND STORAGE**

- IF you have a Mask that has R.W.I. (Replaceable, (hand)Washable, Interchangeable) Foam, please remove it before cleaning.
- Remove lens before cleaning.
- Remove the strap before cleaning.
- **NEVER EVER** leave paint on the mask for more than 4 hours.
- After each cleaning use Save Phace Mask Protectant **ONLY** to protect your mask.



## **WARNING**

**DO NOT remove the Black Rubber Lens Gasket!  
Clean with water only. DO NOT wear or use the  
mask if the Black Rubber Lens Gasket has been  
removed or is missing!**

**This product meets or exceeds ASTM F1776.01 Standards for Paintball.**

## **FOREHEAD AND VISOR INSTALLATION AND REMOVAL**

### **Removal:**

First remove the lens. Then with a magnetic Phillips screwdriver, unscrew the screws located in the mask top ventilation piece.

### **Installation:**

Line up the accessory you are trying to install with the screw hold located in the top ventilation piece.

## **FOREHEAD AND VISOR INSTALLATION AND REMOVAL**

### **Installation:**

Starting in the middle, using a magnetic screwdriver, loosely install one screw at a time. When all screws have been installed, tighten each one until the accessory is firmly in place.

### **Removal:**

Reverse installation order.

## **Ocular Marking**

SP: The manufacturer's identification mark.

EN 166: Number of this standard.

2: Optical Class markings after the manufacturer's identification mark.

S: Increased Robustness marking after Optical Class marking.

O: Marking identifying the ocular is an original part.

## **Frame Marking**

SP: The manufacturer's identification mark.

EN166: Number of this standard.

S: Increased Robustness marking (S)

Complies with European Standard En 166.2001

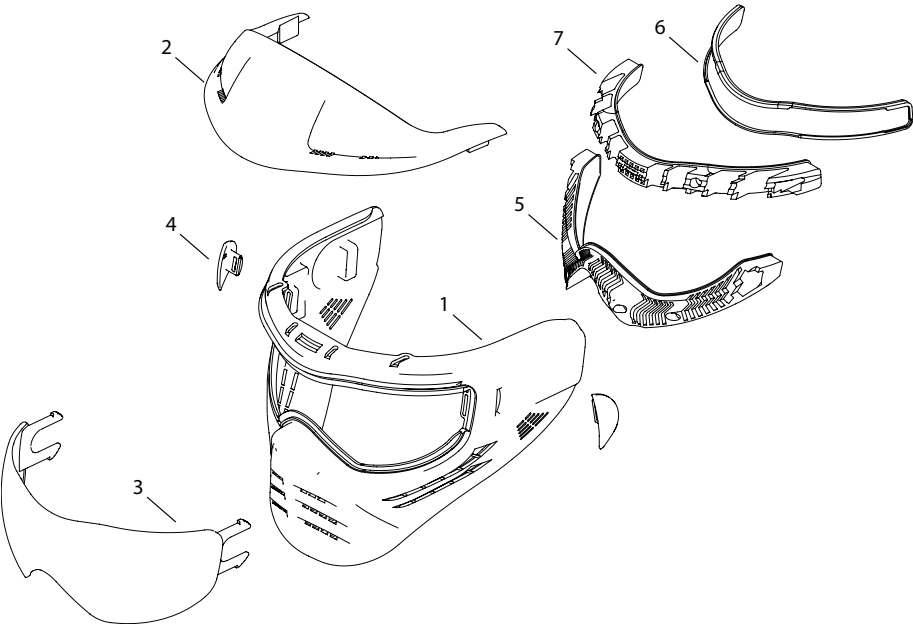
Notified Body – INSPEC, 56 Leslie Hough Way, Salford, M6 6AJ, UK. NB number 0194

# REPLACEMENT PARTS

Not all components are replacement items, but are illustrated as a convenient reference of location and position in the assembly sequence. When ordering parts, please give the Model number and parts description. Call or write for current pricing:

SFA Companies 10939 N. Pomona Ave. Kansas City, MO 64153, U.S.A.

E-Mail: [savephacesupport@sfacompanies.com](mailto:savephacesupport@sfacompanies.com) Tel: (866) 783-3223 Fax: (816) 891-6599



Item	Part Number		Description	Qty.
	Gen X			
1			Mask	
2			Mask Hood or Cap	
3			Lens	
4			Clip	
5			Protective Inside Lens	
6			ADF	
7			ADF Holder	
8			Protective Lens	
9			Halo (Not Shown)	

**NOTES:**

## ONE YEAR LIMITED WARRANTY

SavePhace products undergo a strict quality control inspection for workmanship, function, and safety before leaving the factory. From the date of purchase, **SavePhace** will warranty or repair its products for: one (1) year on its helmet and two (2) years on its ADF against defects in parts and workmanship. We have a general warranty claim form along with potential request of proof of purchase.

In the unlikely event a problem is experienced with any of our products, a return merchandise authorization (RMA) number must be obtained by contacting us toll-free at 866-783-3223. Each product to be returned must have the item number, description of the problem and proof of purchase. All returns must have a RMA number marked clearly on the outside of the shipping box, and printed RMA form enclosed inside the box. Only SavePhace can determine if product can be repaired or must be replaced.

Except where such limitations and exclusions are specifically prohibited by applicable law, (1) THE CONSUMER'S SOLE AND EXCLUSIVE REMEDY SHALL BE THE REPAIR OR REPLACEMENT OF DEFECTIVE PRODUCTS AS DESCRIBED ABOVE. (2) **SavePhace**. SHALL NOT BE LIABLE FOR ANY CONSEQUENTIAL OR INCIDENTAL DAMAGE OR LOSS WHATSOEVER. (3) ANY IMPLIED WARRANTIES, INCLUDING WITHOUT LIMITATION THE IMPLIED WARRANTIES OF MERCHANTABILITY AND FITNESS FOR A PARTICULAR PURPOSE, SHALL BE LIMITED TO ONE YEAR, OTHERWISE THE REPAIR, REPLACEMENT OR REFUND AS PROVIDED UNDER THIS EXPRESS LIMITED WARRANTY IS THE EXCLUSIVE REMEDY OF THE CONSUMER, AND IS PROVIDED IN LIEU OF ALL OTHER WARRANTIES, EXPRESS OR IMPLIED. (4) ANY MODIFICATION, ALTERATION, ABUSE, UNAUTHORIZED SERVICE OR ORNAMENTAL DESIGN VOIDS THIS WARRANTY AND IS NOT COVERED BY THIS WARRANTY.

Some states do not allow limitations on how long an implied warranty lasts, so the above limitation may not apply to you. Some states do not allow the exclusion or limitation of incidental or consequential damages, so the above limitation or exclusion may not apply to you. This warranty gives you specific legal rights, and you may also have other rights, which vary from state to state.

---